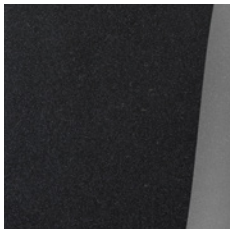


ELECTRA 1028 Be

Product Data Sheet



The Electra 1027 Be was a flagship of the Focal range, the 1028 Be goes even further, especially in the bass with the dual port Powerflow system. The dynamic leaps forward to be in harmony with the generosity and definition of the midrange-treble register that has always been a reference. A compact floorstander with irrefutable charm.



Black Lacquer



Ebene

Key points

- Made in France loudspeakers and drivers
- High size/performance ratio for optimum integration
- Powerflow port

| Type | 3-way vented floor standing speaker, Powerflow |
|-----------------------------|--|
| Drivers | Two 6 1/2" (16.5cm) 'W' woofers 6 1/2" (16.5cm) 'W' midrange 1 1/4" (27mm) pure Beryllium IAL inverted dome tweeter |
| Frequency response (+/-3dB) | 34Hz - 40kHz |
| Low frequency point (-6dB) | 28Hz |
| Sensitivity (2.83V/1m) | 91.5dB |
| Nominal impedance | 8Ω |
| Minimum impedance | 3.5Ω |
| Crossover frequency | 350Hz / 2,200Hz |
| Recommended amplifier power | 40 - 300W |
| Dimensions (HxWxD) | 43 11/16 x 10 3/8 x 13 3/4" (1,110x264x350mm) |
| Net weight | 72.6lbs (33kg) |